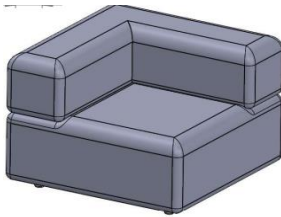


Declared unit:

Biggie, Corner Module

by HOLMRIS B8



The total climate impact is no more than

220 kg CO₂-e

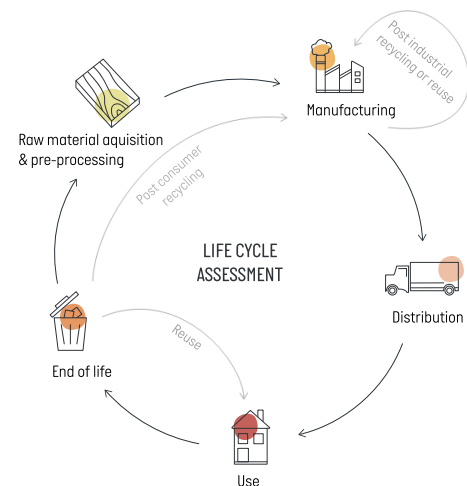
This result is a Self-assessment, and therefore NOT verified.

LIFE CYCLE ASSESSMENT STAGES

This complete LCA-screening (cradle-to-grave) includes the total climate impact (KG CO₂e) for the full life-cycle of the Declared unit.

All life-cycle stages have been declared, and can be viewed in the below table and related visualisation

Stage	Climate impact
Raw Material aquisition & Pre-processing	42,20 %
Manufacturing	26,94 %
Distribution	4,17 %
Use	5,50 %
End of life	21,19 %
TOTAL	100,00 %



This **LCA-screening** is based on the **PEF-method (Product Environmental Footprint)** by **The European Commission**, see the **DISCLAIMER** for its relationships to other environmental accounting methods and guidance documents.

09-04-2025

Owner of this declaration:

HOLMRIS B8 A/S

Odinsvej 5

8850 Bjerringbro

Denmark

Software provider for this LCA:

MÅLBAR

Material group representation and their climate emissions*

Presented below are the different material groups in the product and their estimated contribution to the products total emissions as well as a presentation of the material breakdown.

Material Group	Share of total impact*	Total material weight
Solid Wood	1,03 %	1,09 Kg
Wood based board	44,01 %	43,31 Kg
Metal	4,22 %	1,98 Kg
Plastic	0,00 %	0,00 Kg
Glass / Stone / Ceramics	0,00 %	0,00 Kg
Surface finish & chemical	0,00 %	0,00 Kg
Upholstery	15,59 %	7,81 Kg
Cover	20,31 %	3,45 Kg
Electronic components	0,00 %	0,00 Kg
Packaging	5,17 %	6,20 Kg
TOTAL (incl packaging)		63,83 Kg
TOTAL (excl. Packaging)		57,63 Kg

DISCLAIMER

Standard for calculation

This climate footprint report is calculated according to EUs rules for Product Environmental Footprint (PEF). When data was not available from the brand-owner, conservative estimates has been applied. All phases of the product lifecycle are included in the calculation. For the phases after factory-gate; Use Phase and Disposal conservative estimates are applied, build from the PEF rules. Specifically, the Disposal part is calculated based on an EU average. This declaration only focus on Climate Impact.

The data sources behind these calculations are: **EcoInvent 3.8** and **EF 3.0 PEF** data as well as **PEF compliant LCA data**. (read more here: www.maalbar.dk/transparency/)

Method of data application

This report is generated by using MÅLBAR's Climate Screening Tool with the brand-owner performing a self-assessment with no external verification. (Read more here: www.maalbar.dk/verification/).

Communication of results

The results in this report are not intended for communication towards the private consumer (B2C) but only for the professional market (B2B).

Responsibility of data

It is the sole responsibility of the Brand Owner concerning all Input data (including: Material weights, Packaging weight and dimensions, Origins of production, origins of material, Transport information and Warehouse and Retail information).

Validity of report

The results of this report is valid for 1 year from the report date.

Software version

v. 2.9700

HOLMRIS B8

Owner of the declaration:

HOLMRIS B8 A/S

Odinsvej 5
8850 Bjerringbro
Denmark

Software used for the LCA:

Målbar ApS

Nørre Voldgade 6, 2.
1358 København K
Denmark